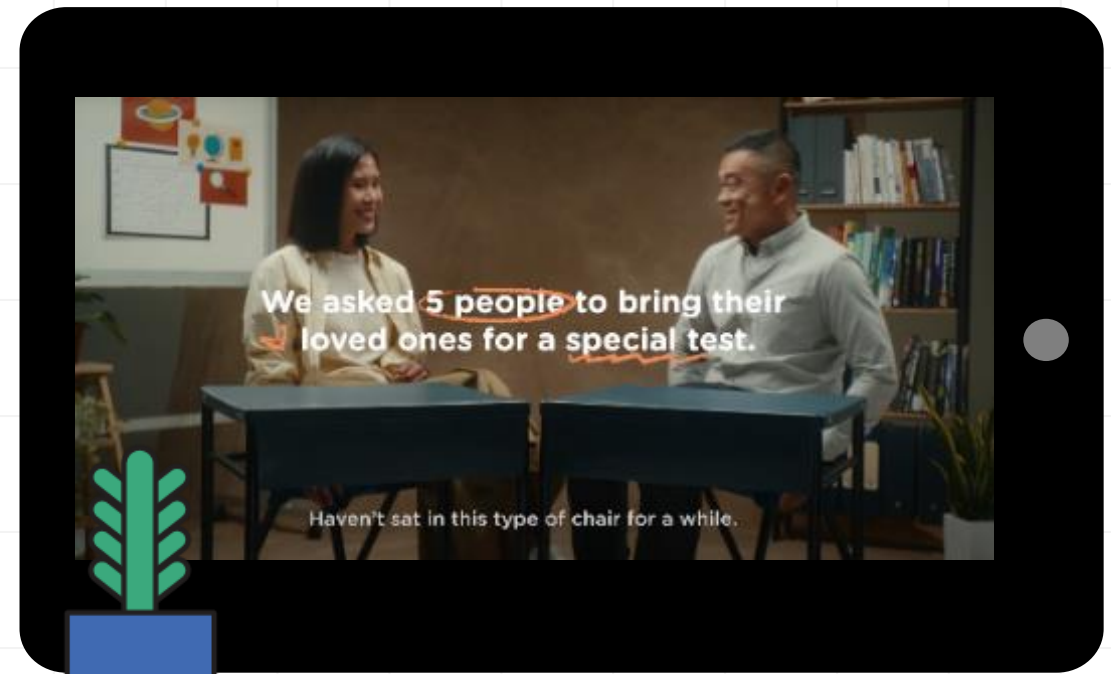
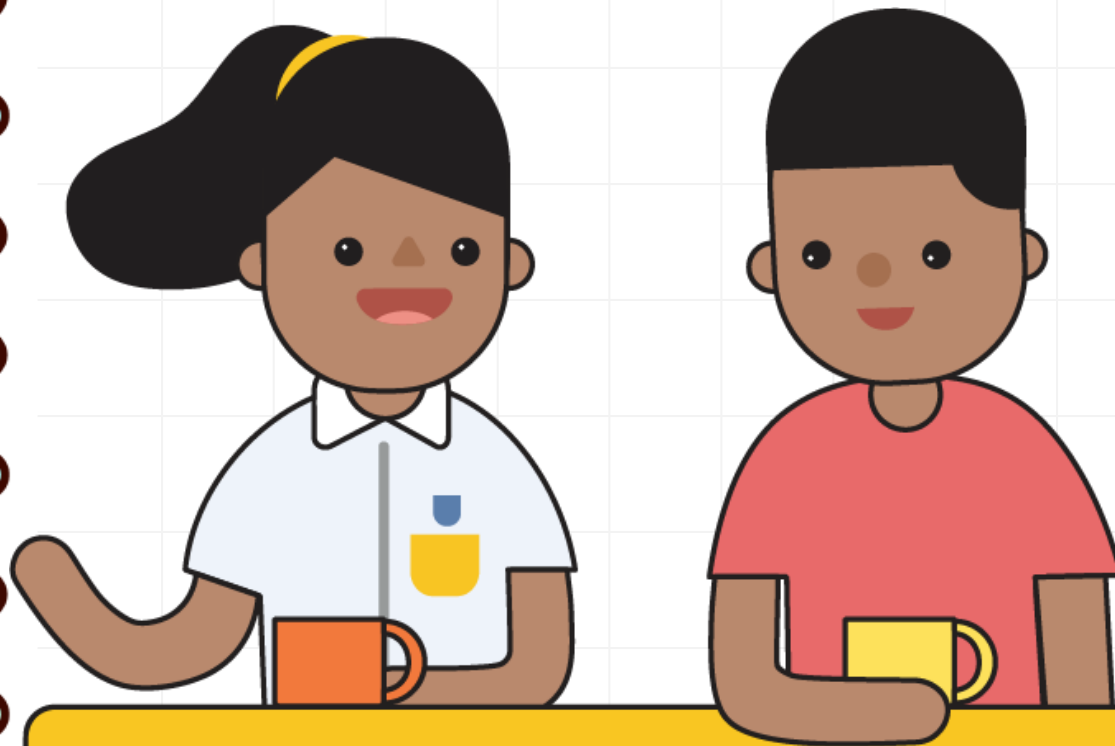


PSD 2024

(PSLE, SBB-Pri and DSA)

Parents Info Kits

BEYOND GRADES – PASSION FOR LEARNING

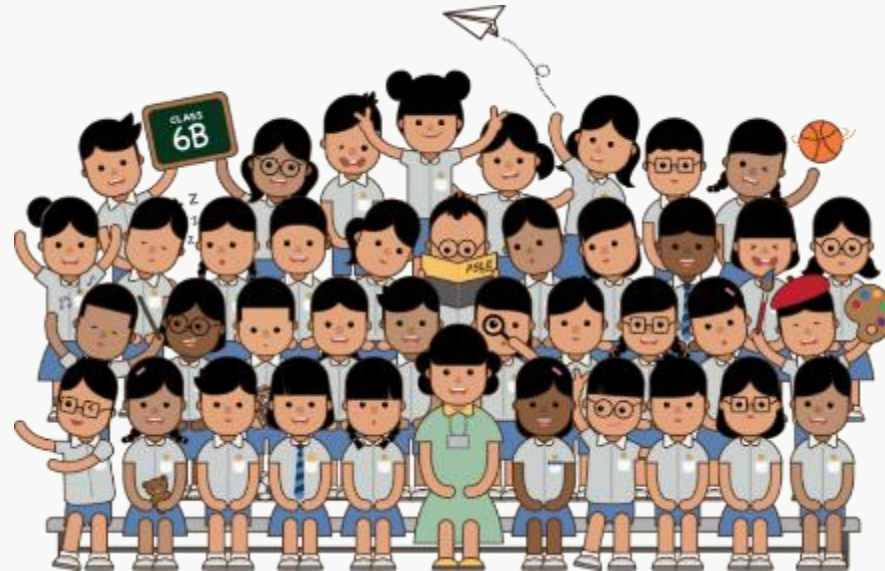


<https://youtu.be/WOi1eoSiLMs>

The PSLE SCORING and S1 POSTING



**SUPPORTING STUDENTS AND PARENTS IN MAKING
INFORMED SCHOOL CHOICES FOR PSLE**



*Learners Driven By Passion
Leaders Guided By Values*

© MINISTRY OF EDUCATION, COMMUNICATIONS AND ENGAGEMENT GROUP, 2023

From this set of information, you will have...

- A better understanding of the support that your child may need in the transition journey from primary to secondary school
- Understanding Full Subject-Based Banding (Full SBB)
- Information on what to expect in secondary school



Sharing About PSLE Matters



**How does the PSLE Scoring &
S1 Posting work?**

**How are students posted to
secondary schools?**

WHAT IS THE INTENT OF THE PSLE?



A useful checkpoint at the end of primary school

A fair way to determine secondary school posting



Over the years, we have been changing the education system to help our students discover and develop their strengths, interests, abilities and talents while moving away from an over-emphasis on academic results. Our PSLE Scoring system reduces the over-emphasis on academic results by:

1

Reducing fine differentiation of students' examination results at a young age.

2

Recognising a student's level of achievement, regardless of how his/her peers have done.

3

Encouraging families to choose secondary schools holistically based on students' strengths, interests and learning needs.

WHAT ARE ACHIEVEMENT LEVELs (AL)?

WHY ARE THE BANDS UNEVEN?



- Students with similar scores in each subject are grouped into scoring bands measured in 8 ALs.
- AL bands and mark ranges are set based on the learning objectives of the curriculum, and mirror the way we learn.

When we learn something new, after some initial practice, we often find ourselves improving significantly.

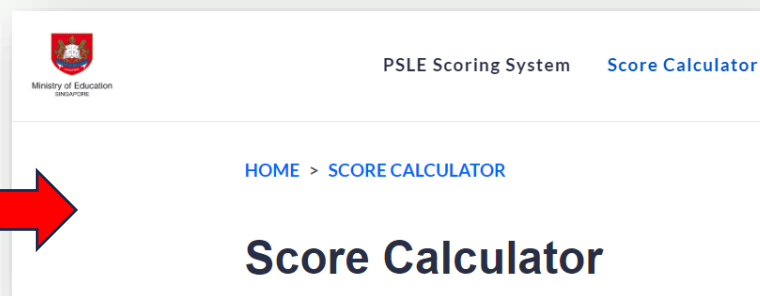
As we get better, the improvements become small steps, and finally, as we reach a high level, we inch just a little further, even after much learning and practice.

The ALs were designed to reflect this reality of learning. They help educators, students, and parents know how ready students are to access the curriculum at the next level.


AL	RAW MARK RANGE
1	≥ 90
2	85 – 89
3	80 – 84
4	75 – 79
5	65 – 74
6	45 – 64
7	20 – 44
8	< 20

HOW DOES THE PSLE SCORING SYSTEM WORK?

- The overall PSLE Score is made up of 4 subject Achievement Levels (ALs).
- The PSLE Score can range from 4 to 32, with 4 being the best.
- Do explore the Score Calculator to find out more about the ALs requirements of passing/repeating.



<https://www.moe.gov.sg/microsites/psle-fsbb/resources/score-calculator.html>



Elena PSLE Score 14	
PSLE Subject	AL Score
English	2
Math	2
Foundation Science	AL A = 6
Mother Tongue Language	4

GRADING OF FOUNDATION SUBJECT GRADES



- Foundation subject grades are graded in scoring bands from **AL A to C**.
- To derive a student's overall PSLE Score for S1 Posting, AL A to AL C for Foundation level subjects are **mapped to AL 6 to AL 8 of Standard level subjects respectively**.
- This mapping is based on the learning and assessment load of the subjects, and informs students of how ready they are for the curriculum in secondary school.

FOUNDATION LEVEL AL	FOUNDATION RAW MARK RANGE	EQUIVALENT STANDARD LEVEL AL
A	75 – 100	6
B	30 – 74	7
C	< 30	8

SCORING FOR MOTHER TONGUE LANGUAGE EXEMPTION

- Students exempted from MTL, due to extenuating circumstances, will be assigned an MTL score so they have a PSLE score comprising four subjects, for the purposes of S1 Posting. The same approach is taken in today's T-score system. Their assigned MTL score will:
 - Take reference from peers with similar scores for English, Mathematics, and Science.
 - Maintain parity of treatment with students who take Foundation MTL (who will score between AL 6 to 8)
- Hence, **students will receive an assigned MTL score between AL 6 to 8 in PSLE.**

The same considerations apply to students taking [Asian Language / Foreign Language](#).



ELIGIBILITY CRITERIA FOR HIGHER MOTHER TONGUE LANGUAGE (HMTL)



- The eligibility criteria for taking HMTL ensures that students can cope with the higher academic load.

ELIGIBILITY CRITERIA FOR HMTL

- (i) An overall PSLE Score of 8 or better**
- or**
- (ii) An overall PSLE Score of 9 to 14 (inclusive); and attain**
 - **AL 1 / AL 2 in MTL or**
 - **Distinction / Merit in HMTL**

- For students who do not meet the above criteria, secondary schools will have the flexibility to offer HMTL to students if they are assessed to have high ability and interest in MTL, and are able to cope with the learning load required.

HOW DOES THE S1 POSTING WORK?

- Your child has **six choices** in selecting their secondary schools.
- Your child will be posted to a secondary school based on **academic merit, i.e., PSLE Score**, and their **choice order of schools**.
- If two or more students with the same PSLE Score vie for the last remaining place(s) in a school, the following tie-breakers are used in the following order:
 1. **CITIZENSHIP**
 2. **CHOICE ORDER OF SCHOOLS**
 3. **COMPUTERISED BALLOTING**
- The tie-breaker based on school choice order recognises the different considerations that families have in making school choices.








Tie-breakers

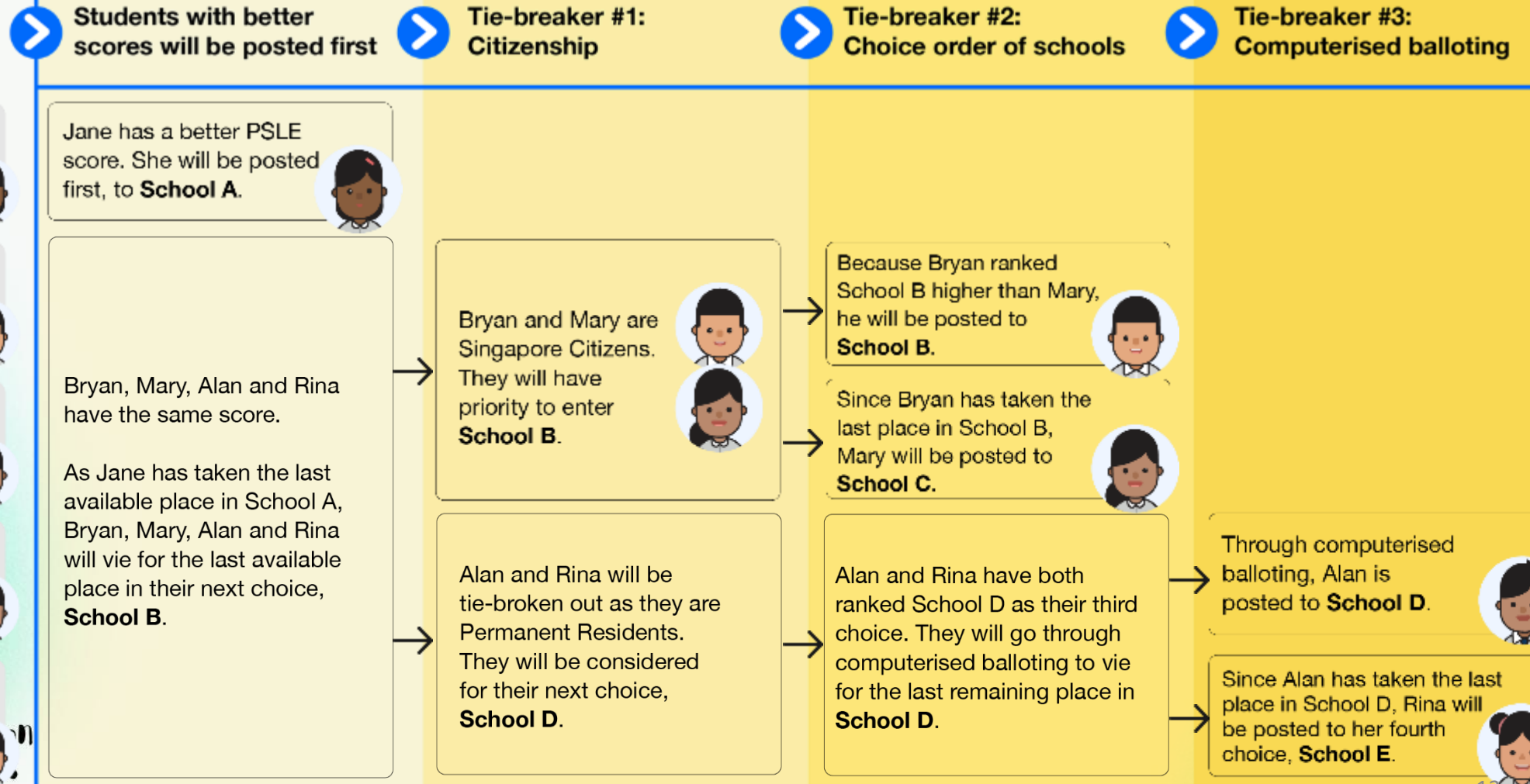
in the new S1 Posting System

Tie-breakers are used only if there are two or more students with the same PSLE Score vying for the last available place(s) in a school.

Here's a simplified example.

5 students are vying for the last places in the schools of their choice.

Jane Singapore Citizen 16 pts	SCHOOL CHOICES: 1) Sch A 2) Sch ... 3) Sch ... 4) Sch ...	
Bryan Singapore Citizen 20 pts	SCHOOL CHOICES: 1) Sch B 2) Sch ... 3) Sch ... 4) Sch ...	
Mary Singapore Citizen 20 pts	SCHOOL CHOICES: 1) Sch A 2) Sch B 3) Sch C 4) Sch ...	
Alan Permanent Resident 20 pts	SCHOOL CHOICES: 1) Sch A 2) Sch B 3) Sch D 4) Sch ...	
Rina Permanent Resident 20 pts	SCHOOL CHOICES: 1) Sch A 2) Sch B 3) Sch D 4) Sch E	



HCL POSTING ADVANTAGE TO SAP SCHOOLS

Students who obtained a Distinction/Merit/Pass for HCL at the PSLE and an overall PSLE Score of 14 or better will receive a posting advantage when applying to SAP schools.

Students will be considered for admission to SAP schools in the following order:



1st

7

NO HCL

Students with better PSLE Scores will be posted first, even if they did not take HCL



2nd

8

DISTINCTION



3rd

8

MERIT



4th

8

PASS



5th

8

NO HCL



6th

9

DISTINCTION

Amongst students with the same PSLE Score, those with better HCL grades will be posted first

- Students' HCL results are denoted as 'D' (Distinction), 'M' (Merit) or 'P' (Pass).
- Students who obtain (i) a Distinction / Merit / Pass in HCL and (ii) a PSLE Score of 14 or better are eligible for posting advantage to SAP schools.
- Students are ranked taking into account their performance in HCL.
- This posting advantage applies before the tie-breakers for S1 Posting.

Understanding Full Subject-Based Banding (Full SBB)



What is Full SBB?

WHAT IS FULL SBB?

- Full SBB will be implemented in secondary schools from 2024, and aims for students to:



Have greater ownership of their learning according to their strengths, interests, abilities, talents and learning needs.



Develop a growth mindset and an intrinsic motivation to learn for life.

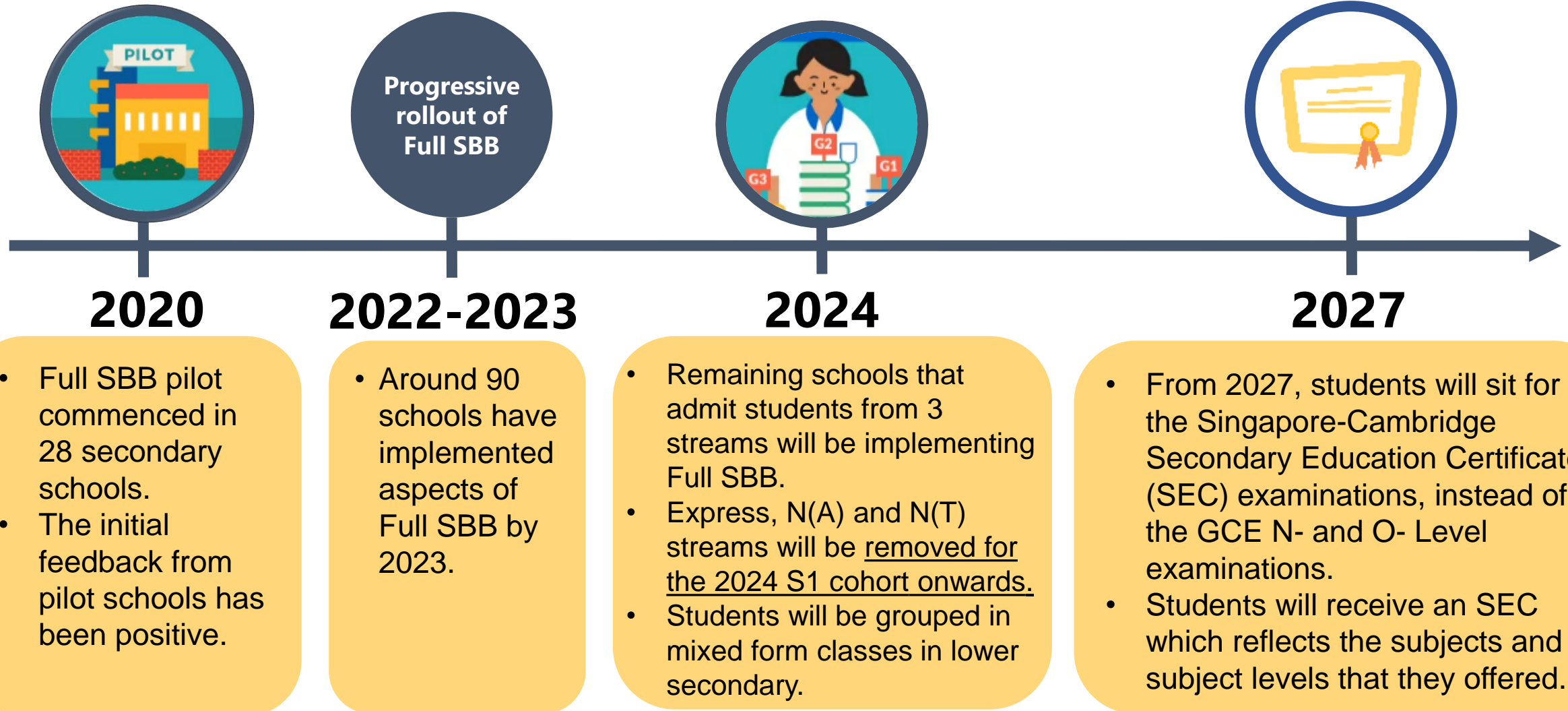


Have more opportunities to interact with friends of different strengths, interests, abilities and talents.



Have more options for post-sec pathways, while ensuring they have strong fundamentals and can thrive in their chosen pathway.

FULL SUBJECT-BASED BANDING (FULL SBB)



FULL SUBJECT-BASED BANDING (FULL SBB)

Secondary school experience under Full SBB

- **Mixed form classes** and **common curriculum subjects** at **Lower Secondary**.
- **Subjects to be offered at G1, G2 or G3**, mapped from the standards of the N(T), N(A) and Express subject levels respectively.
- **Greater flexibility** to customise students' learning by offering subjects at various subject levels.
- **Shift away from stream-based subject offerings.**

After PSLE

Start of Sec

End of Sec

Post Sec

From 2023:
Entry to S1
through 1 of 3
Posting Groups

From 2027:
Singapore-Cambridge
Secondary Education
Certificate (SEC)
examination

Updated post-
secondary admission
criteria

FULL SBB: S1 POSTING

Three Posting Groups to ensure schools are accessible to diverse learners

From the 2024 S1 cohort, MOE will facilitate the admission of P6 students into S1 through 3 Posting Groups: **Posting Group 1, 2 and 3.**

Objective: Ensures that schools continue to admit a **diverse profile of students** and students have **access to a wide range of schools.**

Unlike the academic streams of Express, N(A) and N(T), Posting Groups will only be used for the purposes of facilitating entry into secondary school and to guide the subject levels students offer at the start of S1.

- Posting Groups assigned based on PSLE Scores, mapped from existing PSLE Score ranges for Express, N(A) and N(T) streams.
- PSLE Scores provide a good gauge of the subject levels that students can offer at the beginning of S1.

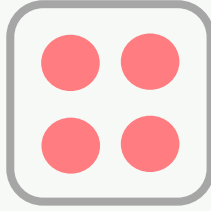
PSLE Score	Posting Group	Subject level for most subjects
4 – 20	3	G3
21 and 22	2 or 3	G2 or G3
23 and 24	2	G2
25	1 or 2	G1 or G2
26 – 30 (with AL 7 in EL and MA)	1	G1

FULL SBB: MIXED FORM CLASSES IN LOWER SECONDARY

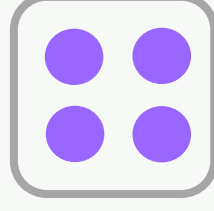
Form classes arranged by academic stream in schools yet to implement Full SBB



Students
in Exp
stream



Students
in N(A)
stream



Students
in N(T)
stream

With Full SBB:
Mixed form classes



- Under Full SBB, students will be placed in mixed form classes in Lower Secondary to ensure a **mix of learner profiles**.
 - Provides students with **more opportunities** to interact with other students of different strengths and interests.
 - Enables students to **build meaningful friendships and learn to value different perspectives**.



Students posted through **PG3**



Students posted through **PG2**



Students posted through **PG1**

FULL SBB: COMMON CURRICULUM



Common Curriculum Subjects taken in mixed form classes (~1/3 curriculum time)

Examinable Subjects:

- Art
- Design & Technology (D&T)
- Food & Consumer Education (FCE)

Non-examinable Subjects:

- Character & Citizenship Education (CCE)
- Music
- Physical Education (PE)

- The six common curriculum subjects would each have a single syllabus for all students at Lower Secondary levels.
 - These subjects will be taught and assessed at a common level that is accessible to all students.
 - Teachers will adopt a range of approaches to cater to the different learning needs of their students.
- For other subjects, students attend classes with others taking the subject at the same subject level.

OFFERING SUBJECTS AT A MORE DEMANDING LEVEL AT THE START OF SEC 1

- Students posted to schools through PG1 and PG2 can offer **English Language, Mother Tongue Languages, Mathematics and Science** at a more demanding level based on their PSLE AL for each subject.

FOR STUDENTS POSTED TO SCHOOLS THROUGH PG1 AND PG2			
SUBJECT	PSLE SUBJECT LEVEL	PSLE AL FOR SPECIFIC SUBJECT	OPTION TO TAKE THE S1 SUBJECT AT :
• English Language • Mother Tongue Language • Mathematics • Science	Standard	AL 5 or better	G3 or G2
		AL 6	G2
	Foundation	AL A	G2

OFFERING SUBJECTS AT A LESS DEMANDING LEVEL AT THE START OF S1



- For students who offered **English Language, Mathematics and/or Science** at Foundation level at PSLE, but are otherwise eligible to take most of their subjects at G3 when entering secondary school, they may choose to take these subjects at a less demanding level (LDL; i.e., G2), in consultation with their secondary schools.
- Students have the option to offer **Mother Tongue Languages (MTL)** at LDL based on their PSLE Achievement Level (AL) for the subject:

POSTING GROUP (PG)	PSLE AL FOR MTL [^]	OPTION TO OFFER MTL AT A LESS DEMANDING LEVEL
PG3	AL 6	G2
	AL 7-8	G1 or G2
PG2	AL 7-8	G1

[^] Foundation level AL A to AL C will be mapped to AL 6 to AL 8 of Standard level subjects respectively.

- Students who are eligible to offer MTL at LDL can still choose to offer MTL at-level if they prefer.

SUBJECT LEVEL FLEXIBILITY BEYOND THE START OF S1



- Beyond the start of Sec 1, students may **adjust their subject levels across their secondary school journey**.
 - Students may offer subjects, including English Language, Mother Tongue Languages, Mathematics, Science and Humanities subjects at a **more demanding level** if they meet the criteria and based on the school's holistic considerations.
 - Students who are not coping well may **offer subjects at a less demanding level**, based on their school-based performance and school's holistic considerations, to calibrate their curricular load.
 - In upper secondary, students may offer elective subjects (for example, Additional Mathematics, Art, Design & Technology) at a subject level suited to their strengths, interests and post-secondary aspirations, to **allow them to pursue their interests without adding unduly to their overall curriculum load**.
- Schools will consider **students' learning progress and developmental needs** when helping them determine their subject choices.

Choosing Suitable Secondary Schools

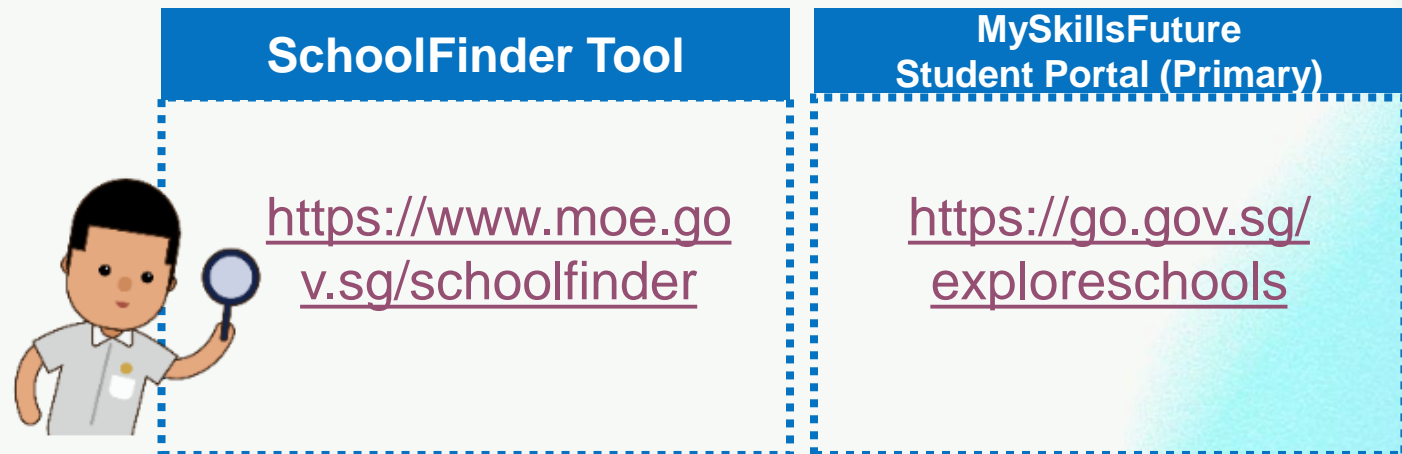
Factors to Consider

Preparing for S1 Posting Exercise



PSLE SCORE RANGES FOR ALL SECONDARY SCHOOLS

- Use the PSLE Score ranges as a reference alongside other important factors, such as the school's distinctive programmes, Co-Curricular Activities (CCA), culture, ethos, and proximity to home when shortlisting school choices that would best fit a student's educational needs.
- The PSLE Score ranges for individual secondary schools will be available for your reference on <https://moe.gov.sg/schoolfinder> and <https://go.gov.sg/exploreschools>. They reflect the PSLE scores of the students posted into these schools at the previous year's S1 Posting Exercise.
- A school's PSLE Score range (including Cut-Off-Point) for a particular year is not pre-determined before the posting, and vary from year to year, depending on the cohort's PSLE results and their school choices in that year's S1 Posting Exercise.



HOW DO WE INTERPRET THE PSLE SCORE RANGES?

The PSLE Score range refers to the PSLE Score of the first and last student admitted to a particular school in the previous year via the S1 Posting Exercise. This shows the range of student profiles who enter each school.

Example

XX Secondary School

PSLE Score range of 20XX (previous year's S1 Posting Exercise)

Posting Group 3	15 – 20
Posting Group 2	21 – 24
Posting Group 1	25 – 28

PSLE Score of the first student posted into the school in the respective PG.

PSLE Score of the last student posted into the school in the respective PGs [i.e., the school's **Cut-Off Point (COP)**].

Note: Posting Groups will be assigned based on PSLE Scores, mapped from existing PSLE Score ranges for Express, N(A) and N(T) streams.

EXAMPLE OF AN SAP SCHOOL'S PSLE SCORE RANGE

While students need not take HCL to enter SAP schools, students who pass HCL receive a posting advantage for admission. To reflect this, the PSLE Score ranges of SAP schools include the HCL grades of the first and last student admitted in the previous year via S1 Posting.

Example

XX Secondary School

PSLE Score range of 20XX (previous year's S1 Posting Exercise)

Posting Group 3	5 (D) – 12 (P)
Posting Group 2	
Posting Group 1	

PSLE Score and HCL grade of the first student posted into the school through PG3.

PSLE Score and HCL grade of the last student posted into the school through PG3 [i.e. the school's Cut-Off Point (COP)].

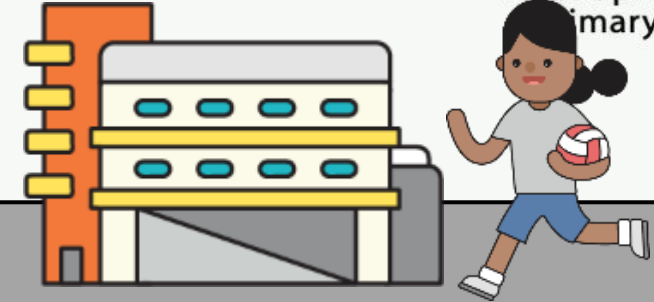
Note: Posting Groups will be assigned based on PSLE Scores, mapped from existing PSLE Score ranges for Express, N(A) and N(T) streams.

SCHOOL CHOICE JOURNEY

- The PSLE Score ranges are a **useful starting point** for parents and students to consider secondary schools.
- Use this information, together with other **important factors** such as the secondary schools' distinctive programmes, CCAs, ethos and cultures, to shortlist schools that would best fit the educational needs of the student.



WHICH SCHOOLS SHOULD MY CHILD SHORTLIST?



- Which secondary schools have programmes and CCAs that can develop your strengths, interests, abilities and talents?

• You may also visit the schools' Open Houses and their websites!



- What are your interests?
- What do you enjoy doing?

Want to know more about yourself?
Embark on a journey in **Career Quest** on
the [MySkillsFuture Student Portal](#)
(Primary) now!

Want to learn more about different
schools? Explore the **Education Guide** on
the [MySkillsFuture Student Portal](#)
(Primary) now!

IMPORTANT FACTORS TO CONSIDER WHEN CHOOSING SECONDARY SCHOOLS

01 SCHOOL CULTURE



What is the school's culture and ethos?

02 LEARNING ENVIRONMENT



How do you feel about the school based on what you saw at the Open House?

03 PROGRAMMES



Does the school have programmes you would enjoy?

04 CCAs



Are there CCAs that interest you and can nurture your strengths, abilities and talents?

05 SUBJECTS

What subjects are offered in the school?

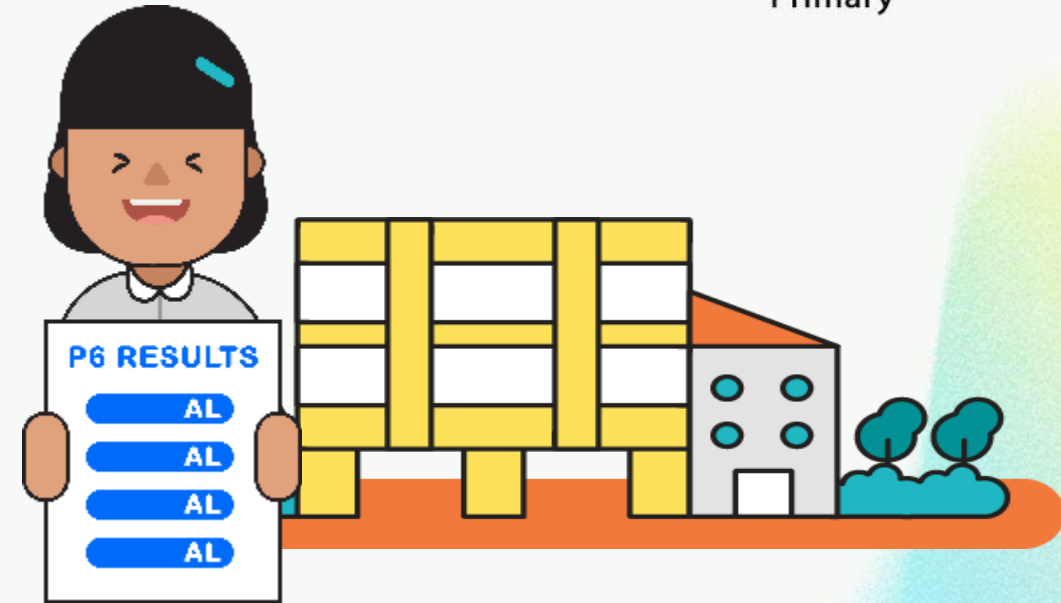


06 LOCATION



How long will it take for you to travel to school and back home?

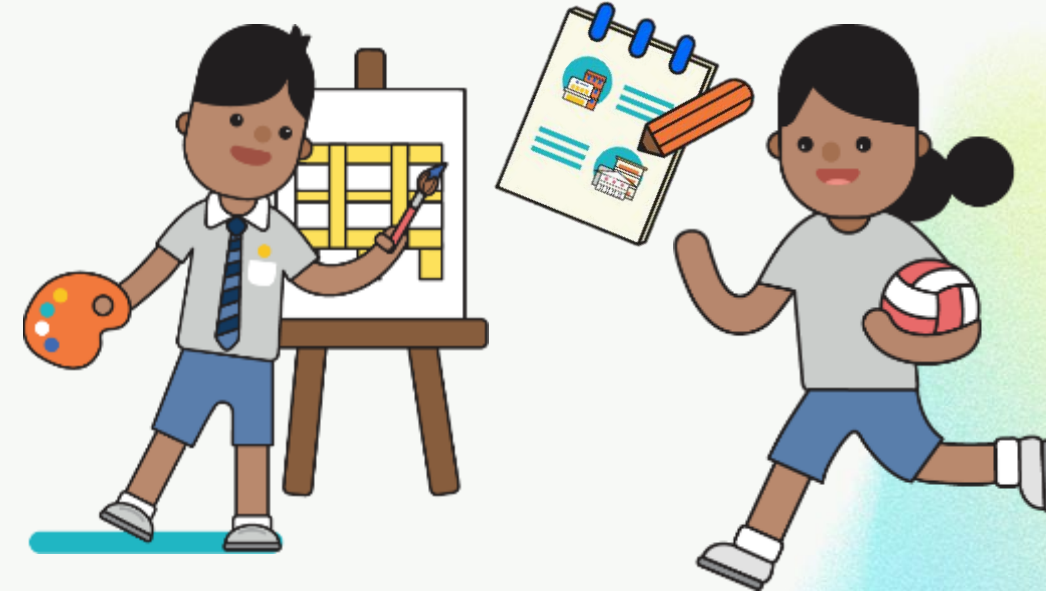
PREPARING FOR THE S1 POSTING EXERCISE



Use all 6 options with a range of Cut-off Points as this will increase your child's chances of being posted to a school of their choice.

Take reference from schools' PSLE Score ranges, which serve as a guide for you and your child to shortlist school choices. Consider at least 2-3 schools where your child's PSLE Score is better than the school's Cut-off Point.

PREPARING FOR THE S1 POSTING EXERCISE



Shortlist schools that offer programmes that cater to your child's strengths, interests, abilities, talents and learning needs, as well as provide suitable learning environments.

Rank your child's preferred school higher in the choice order of schools. This will increase your child's chances of being posted to that school, if they need to undergo tie-breaking.

TIPS FOR PARENTS!

Be open and flexible when discussing your child's preferences, needs and choices.

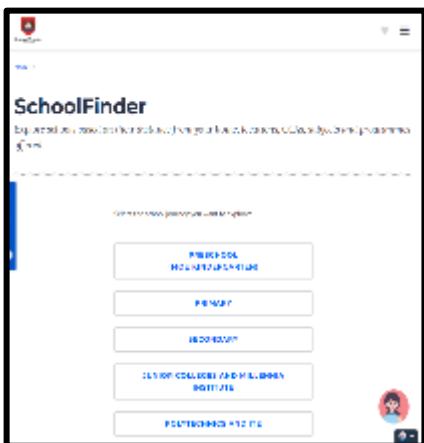
Manage your own expectations and do not project these expectations onto your child.

Have regular conversations with your child to understand more about his/her strengths, interests, abilities, talents and aspirations.



Affirm your child and offer support when he/she shares his/her plans with you.

PREPARING FOR THE S1 POSTING EXERCISE



- Release of **PSLE** results
- Online Submission of **S1 School Choices and Options** 



- Release of **S1**
Posting results



OCTOBER

NOVEMBER

DECEMBER

Subject-Based Banding (Pri) – Intent



Subject based banding (SBB) gives our students the opportunity to take a combination of subjects at standard and foundation levels in P5 and P6 based on their strengths. This allows them to:

Stretch their potential in subjects they are strong in

Build up their understanding in subjects they need more help with.

Taking subjects at the foundation level is not a disadvantage for your child. It will help him/ her to build up the fundamentals for the subjects and better prepare him/ her for progression to secondary school.

Subject-Based Banding (Pri)

– Subject Combinations



If your child (for P4 exam)	Your child may be recommended to take
Passes all 4 subjects and performs very well in Mother Tongue Language	4 standard subjects + Higher Mother Tongue Language
Passes all 4 subjects	4 standard subjects
Passes 3 subjects	4 standard subjects
Passes 2 subjects or fewer	4 standard subjects; or
	3 standard subjects + 1 foundation subject; or
	2 standard subjects + 2 foundation subject; or
	1 standard subjects + 3 foundation subject; or
	4 foundation subjects

Subject-Based Banding (Pri) - Process

Primary 4

- Your child sits for the school exams.
- School recommends a subject combination based on his/her exam results at the end of the year.
- Parents fill up an option form to indicate your child's preferred subject combination.

Primary 5

- Your child takes his/her preferred subject combination.
- School assesses your child's ability to cope with the subjects at the end of the year.
- Adjustments to the subject levels are made if needed.

Primary 6

- Your child takes the subject combination recommended by the school and sits for the PSLE.
- Your child's progression to secondary level depends on their PSLE results.
- If your child excels in certain subjects, they can pursue the subjects at a more demanding level in secondary school.

ENTERING SCHOOLS THROUGH DSA-SEC



- There is no change to the application and selection process with the shift to Full SBB.
- If your child has specific talents and strengths beyond the PSLE (e.g. areas such as sports, performing arts and leadership), consider the **Direct School Admission-Secondary (DSA-Sec)** as an alternative admission pathway to access secondary schools that have talent development programmes in these areas.



**Before
MAY**

Explore schools and their talent areas, and shortlist suitable schools



MAY

Apply for DSA



**JUN to
SEP**

Attend selection trials, interviews and auditions



By SEP

Receive DSA offers if successful

Background about Direct School Admission (DSA)

- Introduced in 2004.
- Provides students with the opportunity to seek admission to a secondary school.
- Admission based on diverse range of specific academic and non-academic achievements and talents beyond the PSLE.
- Parents and students encouraged to choose schools wisely based on aptitudes and strengths.
- Consider schools' academic and non-academic requirements and available programmes to develop areas of talent.

Image credit: NCC Facebook



Intent of DSA



Developing Talent



Strengthening Character



Inculcating Commitment

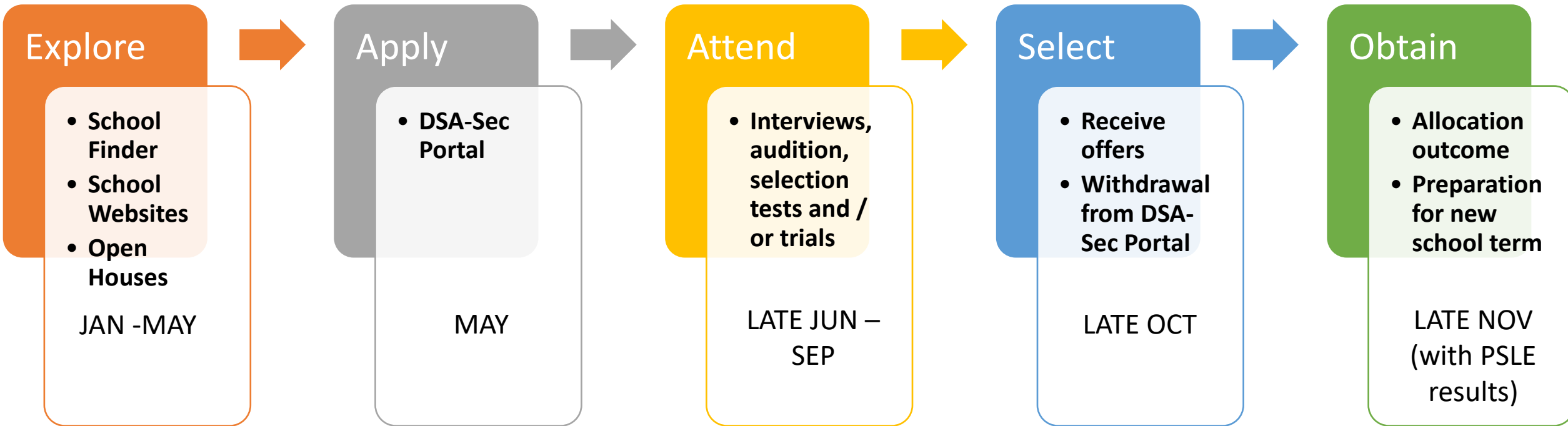


Reinforcing Resilience

Deepening Passion

DSA Timeline and Actions

(Refer to MOE DSA-Sec website for precise dates)



PSLE results need to be within the Cut Off Point (COP) for each posting groups of the school

Should My Child Apply?

My child has the **TALENT** offered by the Secondary School

My child is **PASSIONATE** & **COMMITTED** to developing his strengths

DSA-Sec

My child can cope with the pace of learning and the school meets his/her learning needs

The other factors such as location and school culture/type have been considered

Image credit: Online photos



Platforms provided for West Springers through the years

Academic

- Internal / Department competitions
- External competitions (e.g. Math / Science Olympiad, Science Buskers, STEM, SAFMC, etc.)
- Classroom speaking & presentation skills (Oracy)
- ...(more)

Non-academic

- Leadership (e.g. Prefects, Subject Leaders, etc.)
- CCA competitions / tournaments
- School programmes (e.g. POP, Assembly performances, etc.)
- ...(more)

D
S
A



Secondary schools that offer DSA

1

Go to MOE
SchoolFinder

2

Select the schools by
area

3

Tick DSA

4

Click the Secondary
Schools of choice and
visit their school
websites to find out
more about their
criteria / requirement

A Singapore Government Agency Website [How to identify](#) ▾

SchoolFinder CourseFinder Academic calendar Quick links My shortlisted (0)

Ministry of Education SINGAPORE

Education levels ▾ Financial matters ▾ Education in SG ▾ News Careers About MOE

MOE > SCHOOLFINDER > Last Updated: 27 February 2023

[How to use SchoolFinder](#)

SchoolFinder

Explore schools based on their distance from your home, locations, CCAs, subjects and programmes offered.

Location

Search for schools near you

Enter your postal code [Clear](#)

OR

Search for schools by area

Bukit Panjang ▾

Admission type

☒ Direct School Admission (DSA)
☐ Integrated programme

DSA main Category

All categories ▾

Showing 4 Secondary schools

Area: **Bukit Panjang** ✕

Assumption English School

📍 Bukit Panjang
622 Upper Bukit Timah Road, S678117

📍

Greenridge Secondary School

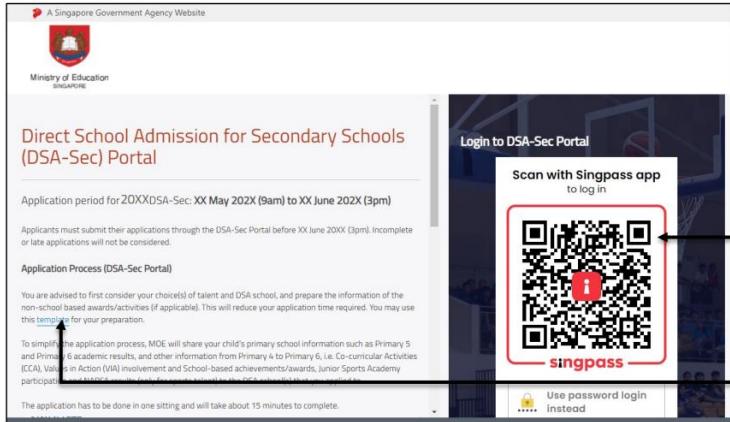
📍 Bukit Panjang
31 Gangsa Road, S678972

📍

West Spring Secondary School

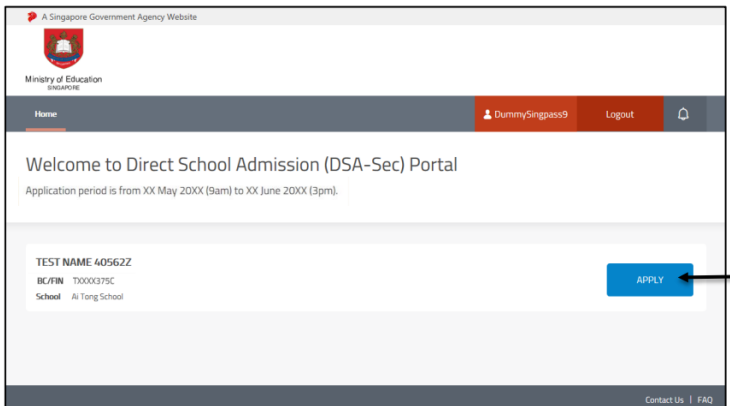
📍 Bukit Panjang
61 Senja Road, S677737

📍

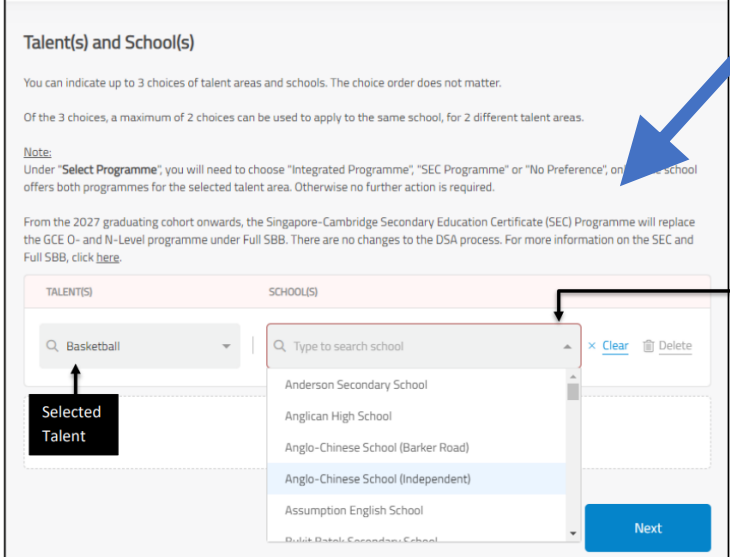


Login via Singpass.

Download this template to prepare the application offline.



Click <APPLY> to proceed.



Only schools that offer the selected talent will be available in this dropdown list.

DSA-Sec Portal (for reference only)

- User Guide For Preference Submission (For students in MOE Mainstream Schools) Published April 2024
- Click the link <https://www.moe.gov.sg/-/media/files/secondary/2024/User-Guide-for-DSASec-Application-MS>
- Indicate up to 3 choices of talent areas and schools; choice order does not matter
- Of the 3 choices, a maximum of 2 choices can be used to apply to the same school, for 2 different talent areas

1. School Preference Submission using DSA-Sec Portal

- 1.1. Applicants who have been given a Confirmed Offer (CO) or Wait List (WL) offer by at least one DSA-Sec School (including SOTA) can access the DSA-Sec Portal to submit the DSA-Sec school preference.

Note:

- If you do not wish to take up any DSA-Sec offer, you need not submit any school preference. Your child will be deemed to have withdrawn from the DSA-Sec.*
- If you do not submit the school preference by end of school preference submission period, your child will be deemed to have withdrawn from the DSA-Sec.*

What if my child has successfully been admitted to a Secondary school via DSA-Sec?

i.e. PSLE Result Release

Successful students **MUST** commit to their school of choice for the duration of the programme.

They will not participate in the Secondary 1 (S1) posting exercise at the end of the year.

And, transfer to another school will not be facilitated once your child has been admitted to a secondary school through DSA-Sec.

DSA is a commitment on the part of both the student and the secondary school.

Image credit: [Lumcarol](#)

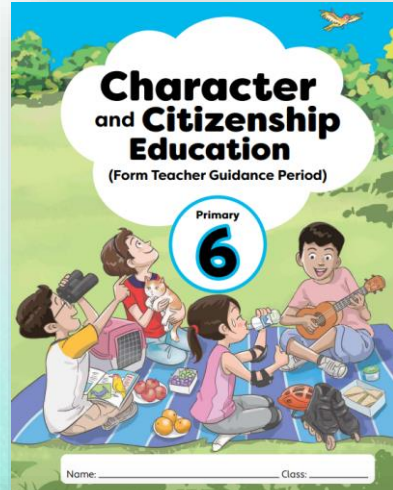


DSA-Sec Info

<https://www.moe.gov.sg/secondary/dsa>



PREPARING FOR THE S1 POSTING EXERCISE



- FTGP, P6 briefing on PSLE ALs, etc.

Learners Driven By Passion
Leaders Guided By Values



- WeStories – Sec Schools in West Zone

2024 version will be
announcement at later date



- Sec Sch Fair, Sec Sch Experiences, etc.

FIND OUT MORE ON THE PSLE-FSBB MICROSITE

[https://go.gov.sg/pslef
sbb](https://go.gov.sg/pslef-sbb)



Do explore the “Score
Calculator” in this microsite.



EXPLORE YOUR FULL SBB PATH



<https://go.gov.sg/my-fsbb-path>

OTHER RESOURCES

“Welcome to Secondary School” video



<https://go.gov.sg/welcome-to-secondary-school>

ECG Tips For Parents



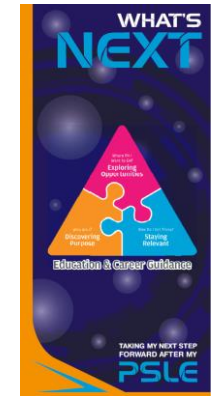
<https://go.gov.sg/tips-for-parents>

MySkillsFuture Student Portal (Primary)



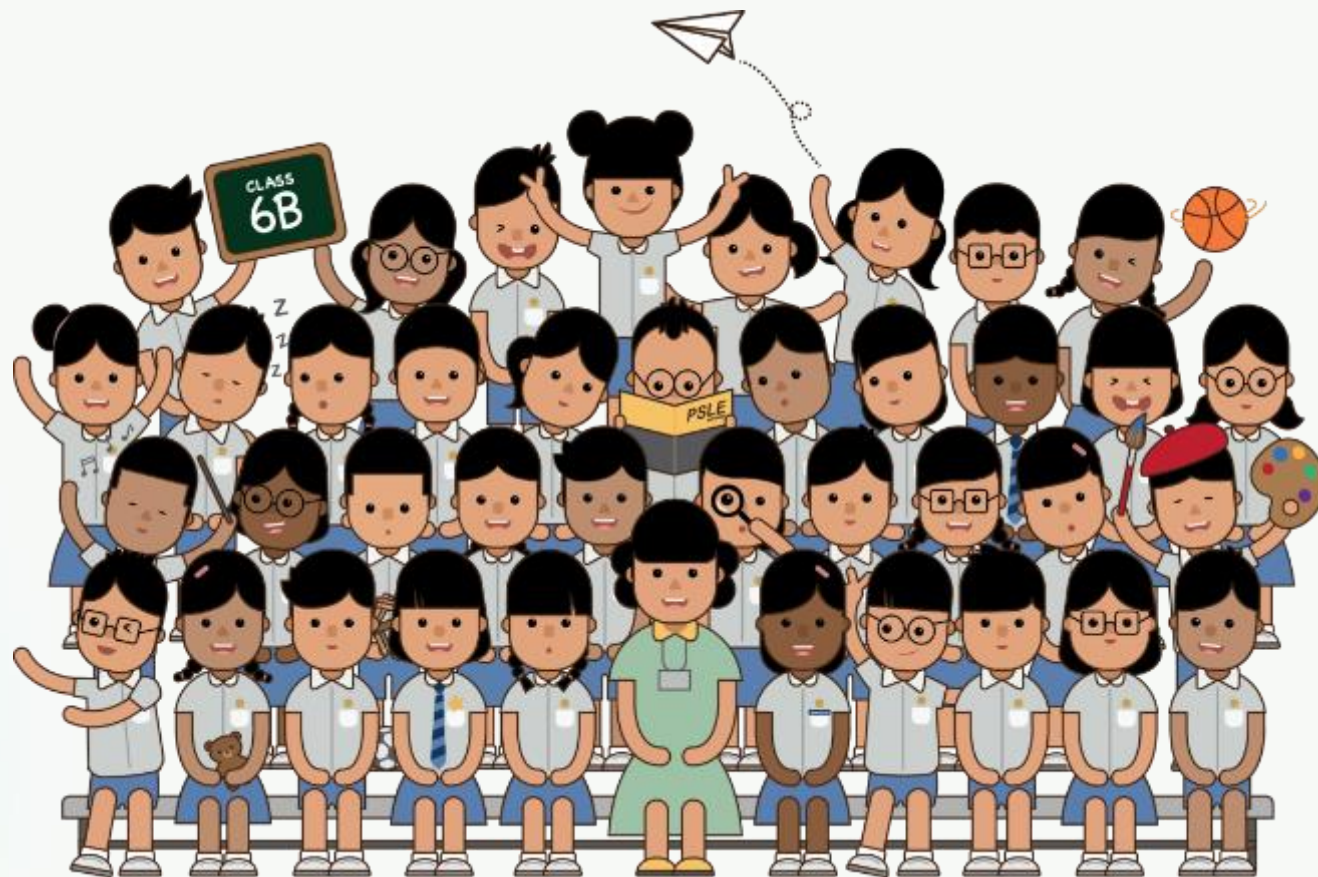
<https://go.gov.sg/mysfpri>

ECG What's Next



<https://go.gov.sg/whats-next-psle>

THANK YOU



Learners Driven By Passion
Leaders Guided By Values